

Intégration d'un équipement KNX : Déclenchement sur interrupteur

Concepts

The 'Write' column corresponds to 'W' objects: device control.

The 'Read' column corresponds to 'T' objects: state feedback for the controlled device (indicator).

The Scenarios enable the execution of a sequence of actions for all the devices.

The triggers run a scenario in accordance with the conditions based on the devices' state.

Installing the device

Example: management of a KNX switch to run a scenario.

We will set a trigger on a scenario.

The trigger will respond to the state of the property of the module based on the bit such as the switch.

The scenario will trigger the required actions.

ETS programming:

Create a group address related to the 'T' object of the switch returning its state to the bus.

□ 11/2/0: related to the 'T' object returning a state to 1 bit.

Example based on a pushbutton connected to the Hager TX304 module's input 1 (4 inputs to be built in).

Configuration of the module's input 1:


Participant: 1.1.55 Boutons x4 (1) 4 entrées à encastrer

Entrée 1-4	Type de canal	Marche / Arrêt
Entrée 1	action sur front actif	marche
Entrée 2	Front actif	front montant
Entrée 3		
Entrée 4		
Informations		

Module objects:

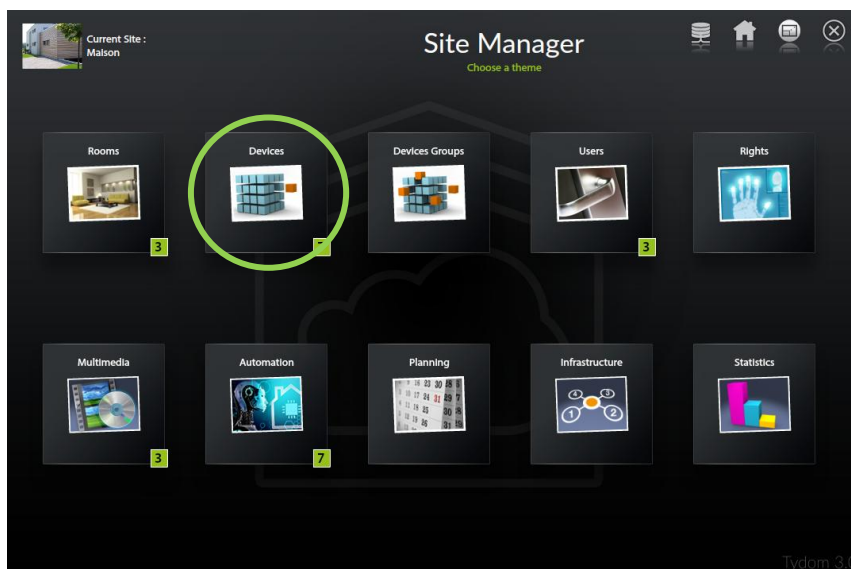
	Nombre	Nom	Fonction d'objet	Descripti...	Adresses de groupe	Longueur	...	R	W	T	U	Type de données	Priori...
1	1	Marche / Arrêt	Entrée 1		11/2/0	1 bit	C	R	-	T	-		Bas
7	7	Inclinaison	Entrée 2			1 bit	C	R	-	T	-		Bas
8	8	Montée / Descen	Entrée 2		12/1/0	1 bit	C	R	-	T	-		Bas
13	13	Inclinaison	Entrée 3			1 bit	C	R	-	T	-		Bas
14	14	Montée / Descen	Entrée 3		12/1/0	1 bit	C	R	-	T	-		Bas
18	18	Indication d'état	Entrée 4			1 bit	C	R	W	-	-		Bas
19	19	Inclinaison	Entrée 4		8/1/1	1 bit	C	R	-	T	-		Bas
20	20	Montée / Descen	Entrée 4			1 bit	C	R	-	T	-		Bas

Interfacing group addresses and properties in Tydom 3.0:

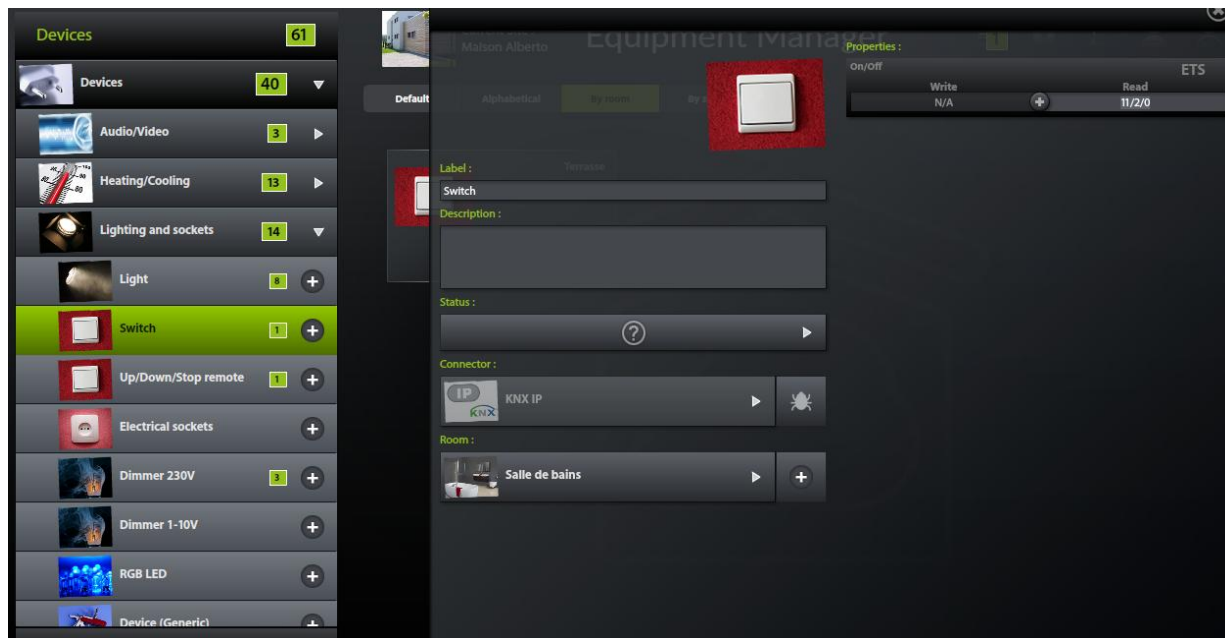
Fonction		Objet	Propriété
Lecture valeur 0 ou 1	Objet de type "T" sur 1 bit DPT 1.001 (On/Off) par exemple		

Programming a device:

- 1 Create a 'switch' type device

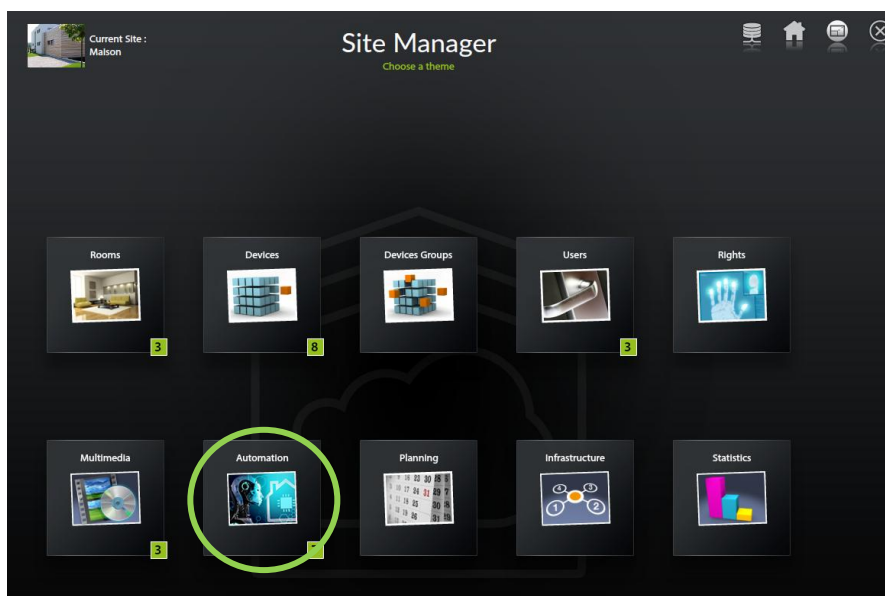


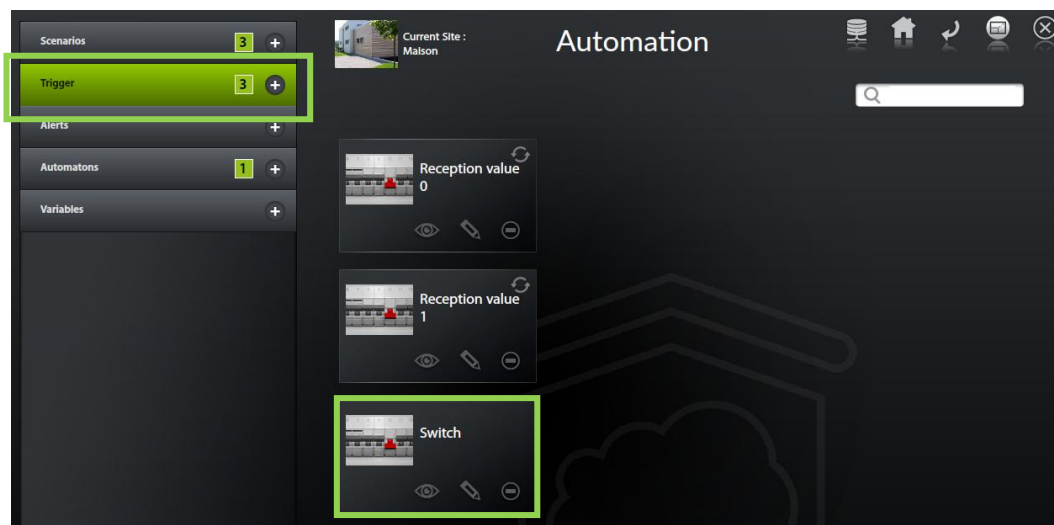
2 Configure the property



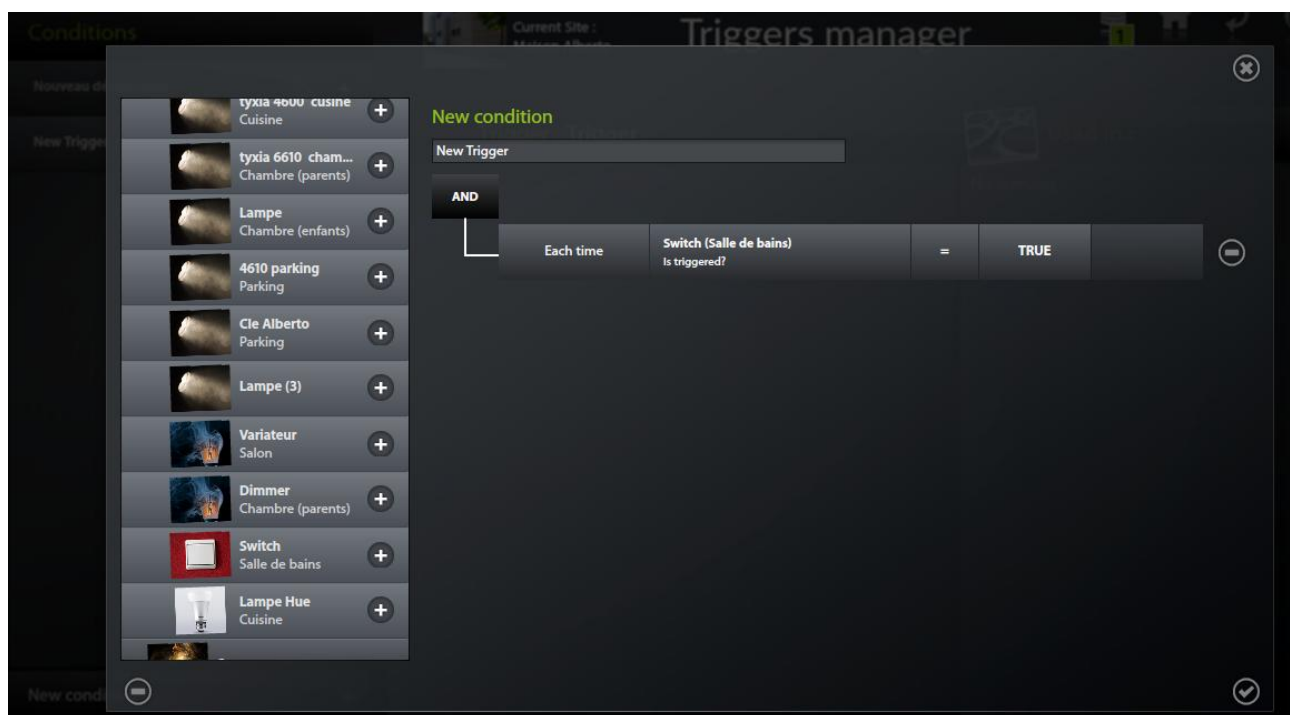
Creating the trigger:

2 Create a trigger in the 'scenarios' module

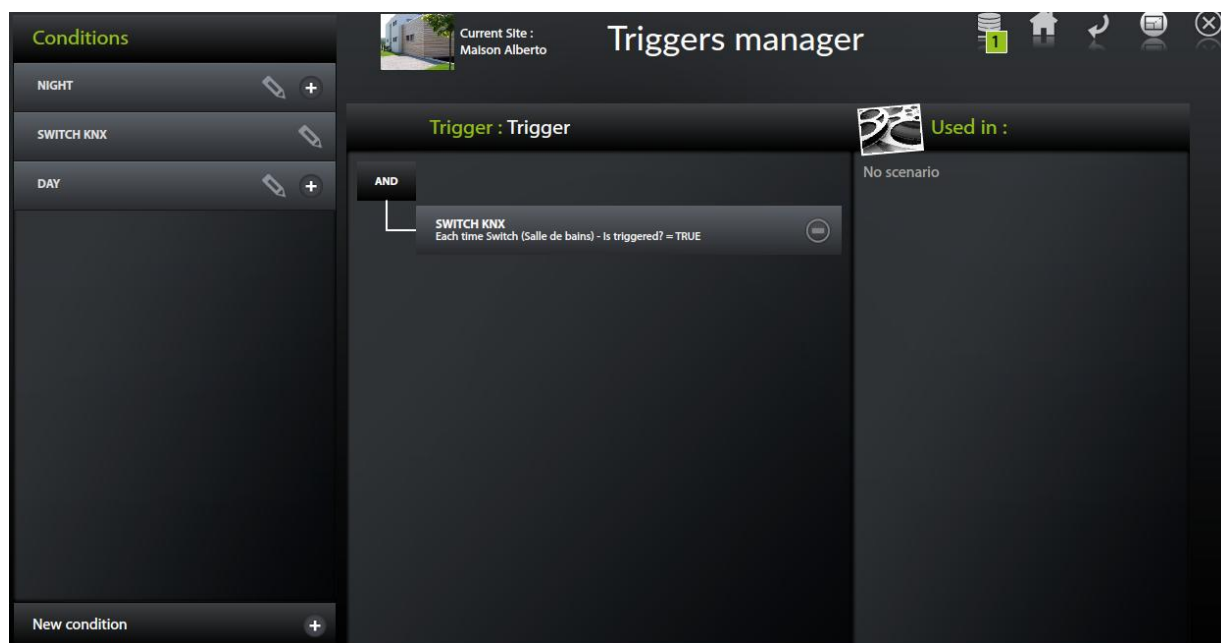




2 Add the condition



2 Select the condition in the trigger



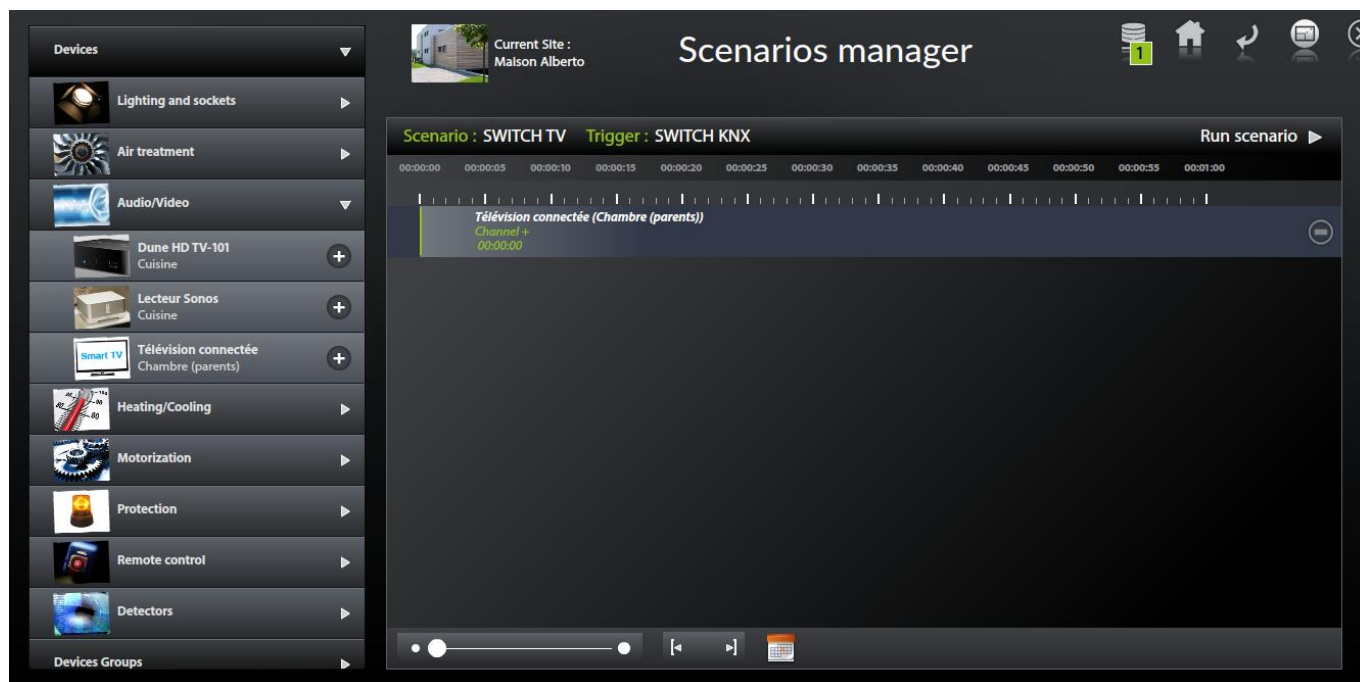
Creating the scenario:



2 Connect the scenario and the trigger



2 Edit the scenario



2 The word 'AUTO' under the scenario's thumbnail must be illuminated for the trigger to run the scenario whenever the value is received

